

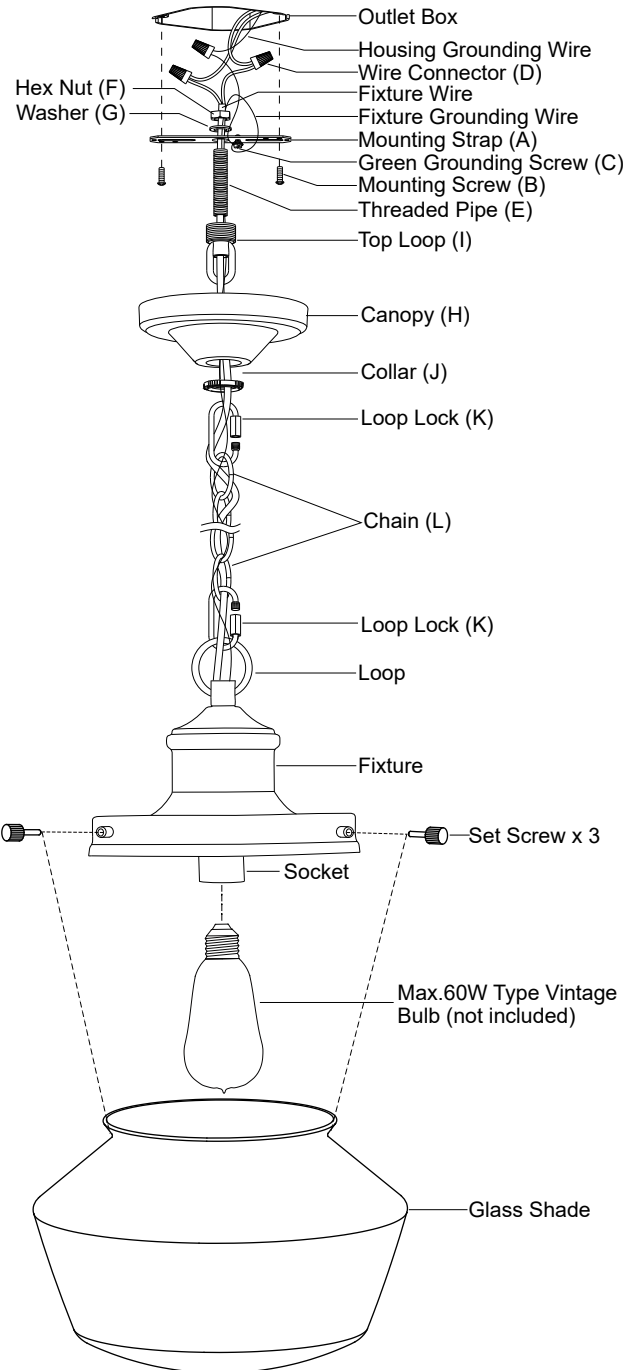
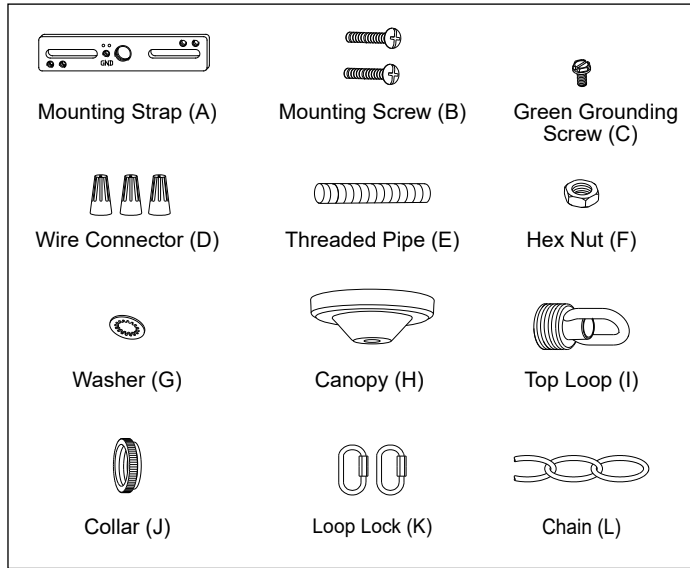
ASSEMBLY AND INSTALLATION INSTRUCTIONS

T0547

WARNING: Turn off the main power at circuit breaker before installing fixture.
AVERTISSEMENT: Coupez la source d'alimentation principale au panneau central de disjoncteurs avant d'installer le luminaire.

NOTE: 1. Before installing, consult local electrical codes for wiring and grounding requirements.
2. READ AND SAVE THESE INSTRUCTIONS.

Hardware Package(inculded):



Installation Steps

Turn off the power at fuse or circuit box.

1. Attach threaded pipe (E) to the mounting strap (A), then secure it with a washer (G) and hex nut (F).
2. Attach the mounting strap (A) to the outlet box by using two mounting screws (B).
3. Secure the top loop (I) to threaded pipe (E).
4. Choose the length of the chain (L) you need, then weave the fixture wire and the fixture grounding wire through the chain (L), collar (J) and canopy (H).
5. Connect one end of the chain (L) with the loop by using a loop lock (K).
6. Connect the other end of the chain (L) with the top loop (I) by using another loop lock (K).
7. Thread the fixture wire and fixture grounding wire through the top loop (I), threaded pipe (E) and mounting strap (A).

8. Pull out the outlet wires and house grounding wire from the outlet box. Make wire connections using the wire connectors (D):
 - The smooth wire (marked) from the fixture to the black wire from the power source.
 - The ridged wire (unmarked) from the fixture to the white wire from the power source.
 - Attach the fixture grounding wire to the mounting strap (A) with the green grounding screw (C). Then connect it to the house grounding wire with a wire connector (D).
 Carefully put the wires back into the outlet box.
9. Attach the canopy (H) to the mounting strap (A) by inserting the top loop (I), then secure it with the collar (J).
10. Install bulbs (not included). See relamping label at socket area or packaging for maximum wattage allowed .
11. Attach the glass shade to the fixture, secure it with three set screws.

Turn on the power at fuse or circuit box.

The following parts are available for re-order if damaged or missing.

Spare Parts List:

 Mounting Strap (A)	 Mounting Screw (B)	 Green Grounding Screw (C)	 Wire Connector (D)	 Mounting Hardware 6197MM(1 SET)
 Threaded Pipe (E)	 Hex Nut (F)	 Washer (G)	 Canopy (H)	
 Top Loop (I)	 Collar (J)	 Loop Lock (K)	 Chain (L)	

Glass Shade
X1
10146CS

Set Screw
6198SER

A: 11-1/2"
B: 10"

1 Year Warranty

Vaxcel warrants all of our products against defects in workmanship and finishes for one year following the date of shipment.

Exclusions: This warranty does not include the failure of products from extreme acts of nature; environmental conditions not suited for the products intended use; operation in temperatures outside of the range specified in the instruction manual; usage with improper power supply, power surges or dips. For coastal locations, some corrosion is considered normal for the environment.

Vaxcel reserves the right to repair, replace or issue a credit for any properly installed product, provided it is returned per RMA instruction. This warranty is limited to the cost of the product only and does not extend to transportation, installation or replacement costs.

How can warranty service be obtained?

info@vaxcel.com

1-800-482-9235