

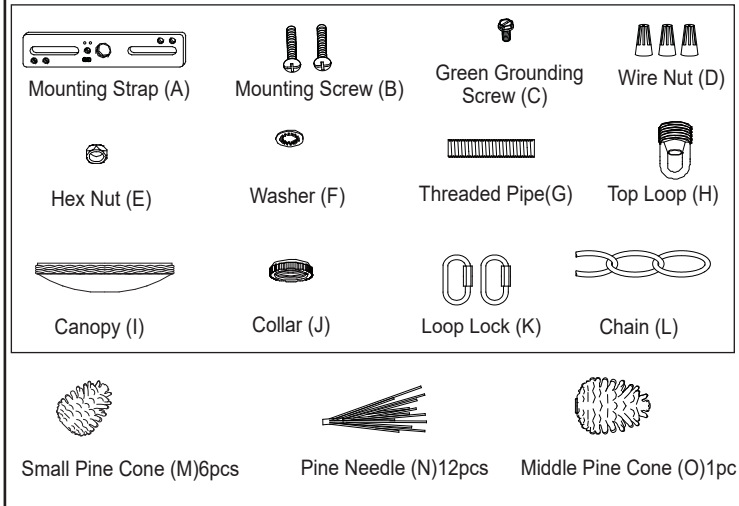
ASSEMBLY AND INSTALLATION INSTRUCTIONS

H0172

WARNING: TO AVOID RISK OF ELECTRICAL SHOCK, BE SURE TO SHUT OFF POWER BEFORE INSTALLING OR SERVICING THIS FIXTURE.

NOTES: 1. Before installing, consult local electrical codes for wiring and grounding requirements.
2. READ AND SAVE THESE INSTRUCTIONS.

Hardware Package (included):



Installation Steps

Turn off the power at fuse or circuit box

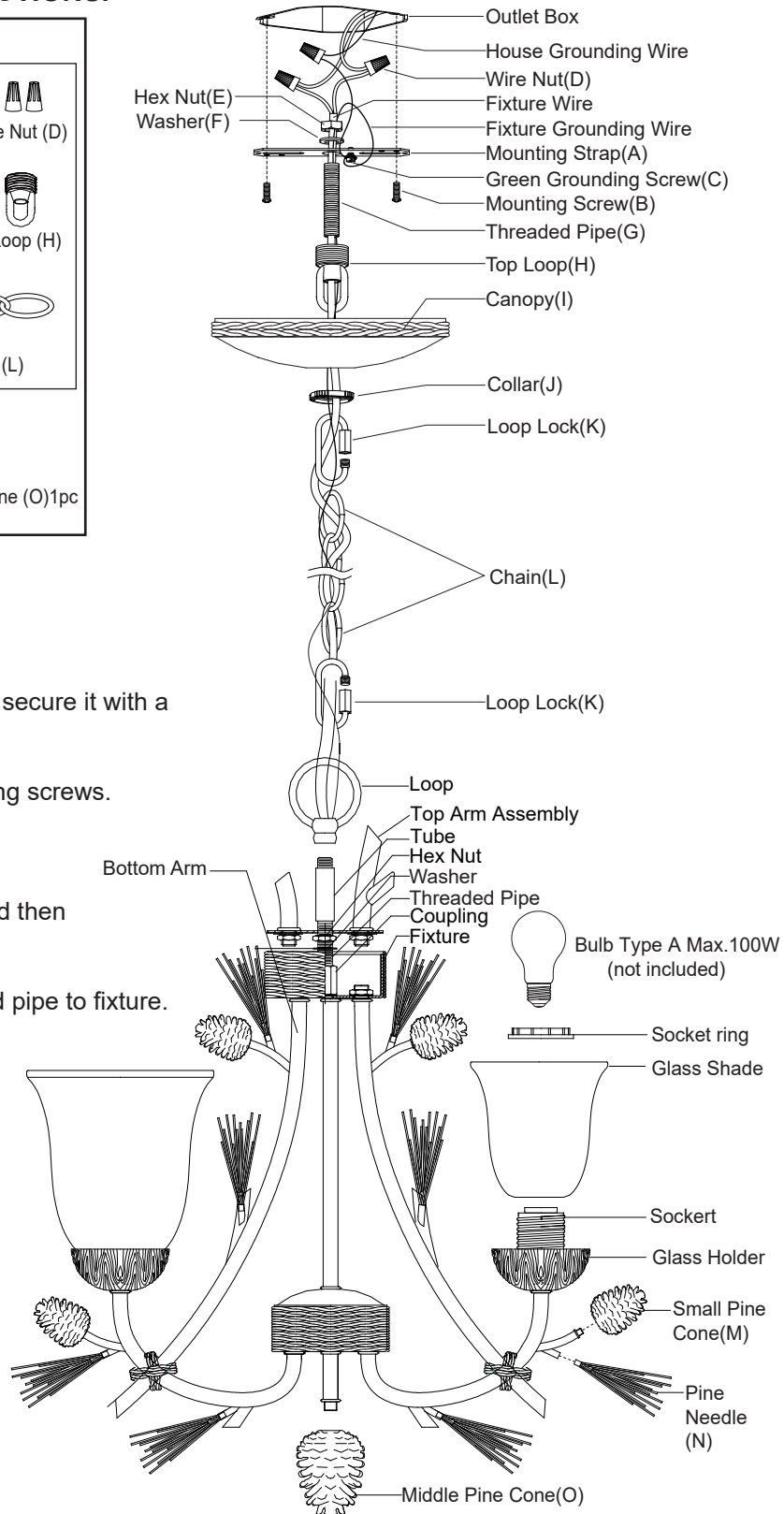
1. Attach threaded pipe to the mounting strap, and then secure it with a washer and a hex nut.
2. Attach mounting strap to outlet box using two mounting screws.
3. Secure the top loop to the threaded pipe.
4. Screw the threaded pipe to the coupling of fixture, and then secure it with a washer and a hex nut.
5. Slip the top arm assembly down through the threaded pipe to fixture.

6. Adjust the arms of the fixture according to the picture on the package.

Important:

- a. The bottom arms should be positioned with equal distances between them.
- b. The bottom arms should be fixed securely.
- c. Each top arm is supposed to be aligned with the corresponding bottom arm.

7. Slip the tube down through the threaded pipe, and then secure it with loop.
8. Secure the pine cones (O, M) and pine needles (N) onto the fixture as shown in graph.
9. Attach the glass shades to the glass holder, and then secure them with the socket rings.



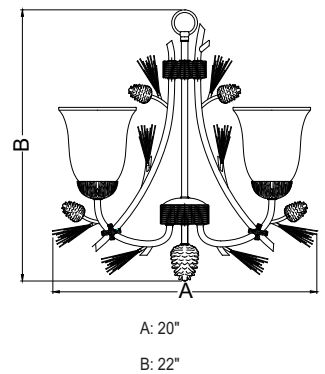
10. Install bulbs (not included). Check relamping label at socket area or packaging for maximum allowed wattage.
11. Connect the chain:
 - Determine needed length of chain to achieve desired fixture height. (To remove excess chain section, use pliers to bend link open.)
 - Weave the fixture wires through the chain, collar and canopy.
12. Connect one end of the chain to the loop using a loop lock.
13. Connect the other end of the chain to the top loop using the other loop lock.
14. Thread the fixture wire and fixture grounding wire through the top loop, threaded pipe and mounting strap.
15. Pull out the source wires from the outlet box. Make wire connections using wire nuts as follows:
 - Connect the smooth-coated wire (marked) from the fixture to the black wire from the power source.
 - Connect the ribbed-coated wire (unmarked) from the fixture to the white wire from the power source.
 - Attach the fixture grounding wire to the mounting strap with the green grounding screw, and then connect it to the house grounding wire with a wire nut.
 Carefully put the wires back into the outlet box.
16. Attach the canopy to the mounting strap, insert the top loop through hole, and then secure it by tightening collar.

Turn on the power at fuse or circuit box

The following parts are available for re-order if damaged or missing.

Spare Parts List:

Mounting Strap (A)	Mounting Screw (B)	Green Grounding Screw (C)	Wire Nut (D)	Hex Nut (E)	Washer (F)
Threaded Pipe (G)	Top Loop (H)	Canopy (I)	Collar (J)	Loop Lock (K)	Chain (L)
Small Pine Cone (M) 5091PC	Pine Needle (N) 5089PN	↓ Assembly Kit 5575MM (1SET)		Middle Pine Cone (O) 5094PC	Glass Shade 9803CC



1 Year Warranty

Vaxcel warrants all of our products against defects in workmanship and finishes for one year following the date of shipment.

Exclusions: This warranty does not include the failure of products from extreme acts of nature; environmental conditions not suited for the products intended use; operation in temperatures outside of the range specified in the instruction manual; usage with improper power supply, power surges or dips. For coastal locations, some corrosion is considered normal for the environment.

Vaxcel reserves the right to repair, replace or issue a credit for any properly installed product, provided it is returned per RMA instruction. This warranty is limited to the cost of the product only and does not extend to transportation, installation or replacement costs.

How can warranty service be obtained?
info@vaxcel.com
 1-800-482-9235