

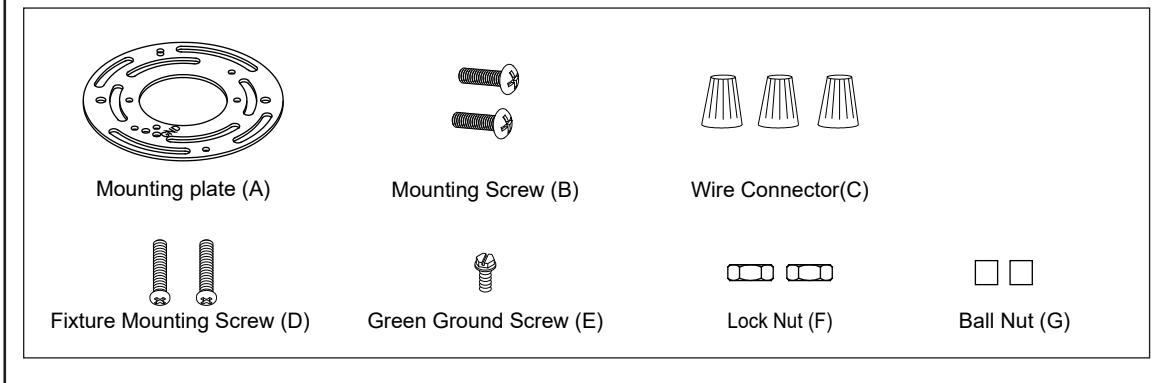
ASSEMBLY AND INSTALLATION INSTRUCTIONS

W0252

WARNING: TO AVOID RISK OF ELECTRICAL SHOCK, BE SURE TO SHUT OFF POWER BEFORE INSTALLING OR SERVICING THIS FIXTURE.

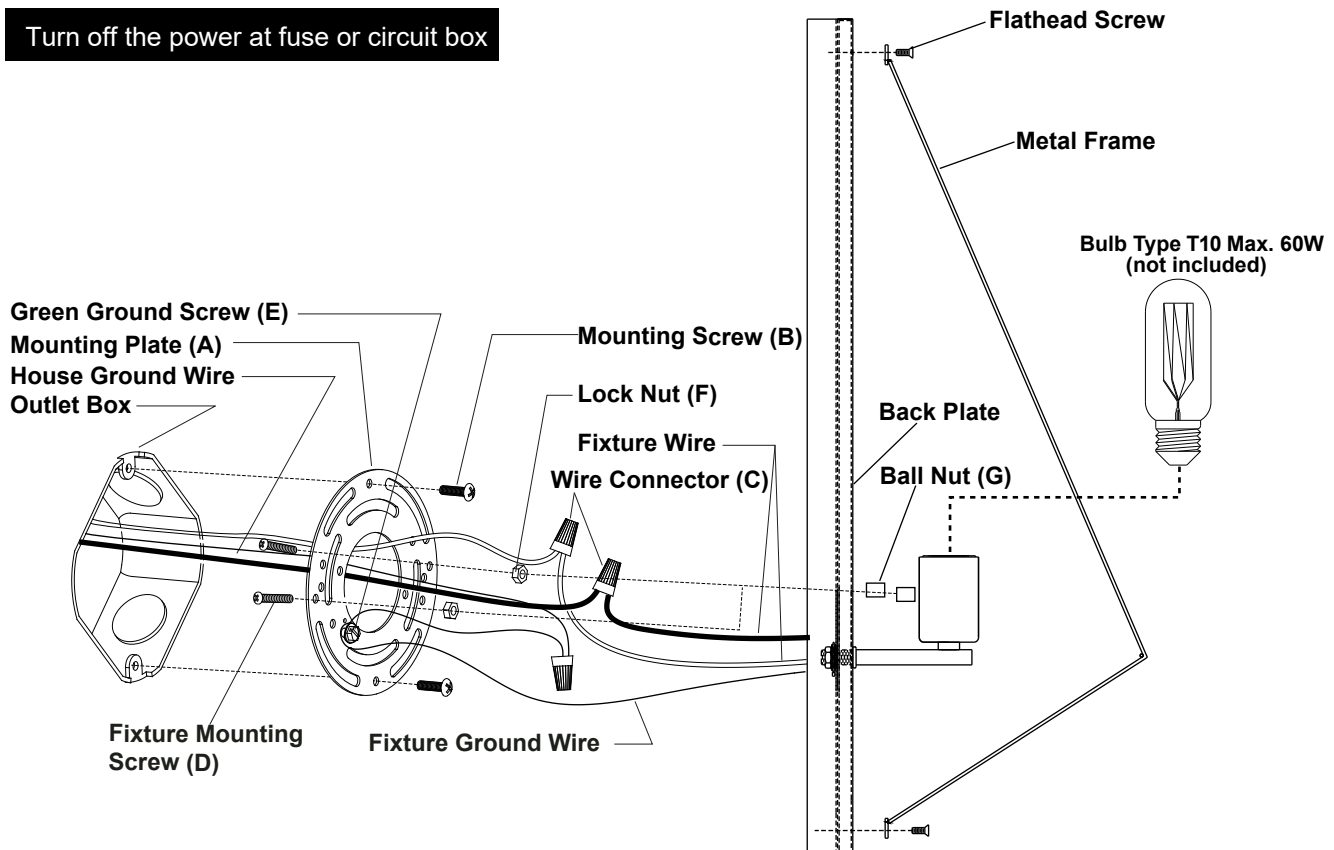
NOTES: 1. Before installing, consult local electrical codes for wiring and grounding requirements.
2. READ AND SAVE THESE INSTRUCTIONS.

Hardware Package (included):



Installation Steps

Turn off the power at fuse or circuit box



1. Attach the metal frame onto the fixture light and tighten it with the flathead screws.
2. Thread two fixture mounting screws (D) to the mounting plate (A), and secure them with two lock nuts (F).
Note: Make sure that the fixture mounting screws are lined up horizontally, to ensure that the fixture will be level.
3. Attach the mounting plate (A) to the outlet box using two mounting screws (B).
4. Pull out the source wires from the outlet box. Make wire connections using wire connectors (C) as follows:
---Connect the hot wire (black insulation) from the fixture to the black wire from the power source.
---Connect the neutral wire (white insulation) from the fixture to the white wire from the power source.
---Attach the fixture grounding wire (green insulation or bare wire) to the mounting plate (A) with the green ground screw (E). Then connect it to the house ground wire with the wire connector (C).
Carefully put the wires back into the outlet box.
5. Attach the back plate to the mounting plate (A) by inserting the fixture mounting screws (D), then secure it with ball nuts (G).
6. Install a bulb (not included). See relamping label on socket area or packaging for maximum allowed wattage.

Turn on the power at fuse or circuit box

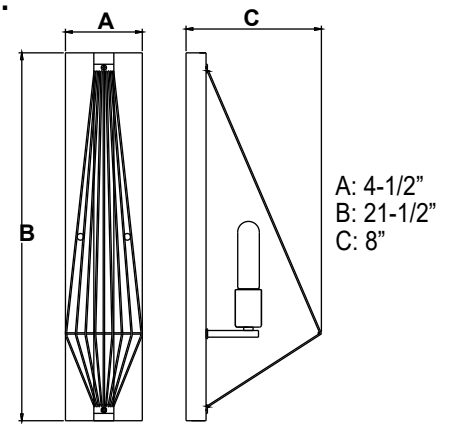
The following parts are available for re-order if damaged or missing.

Spare Parts List:

Mounting plate (A) Mounting Screw (B) Wire Connector (C)

Fixture Mounting Screw (D) Green Ground Screw (E) Lock Nut (F) Ball Nut (G)

Mounting Hardware
5645MM (1 SET)



1 Year Warranty

Vaxcel warrants all of our products against defects in workmanship and finishes for one year following the date of shipment.

Exclusions: This warranty does not include the failure of products from extreme acts of nature; environmental conditions not suited for the products intended use; operation in temperatures outside of the range specified in the instruction manual; usage with improper power supply, power surges or dips. For coastal locations, some corrosion is considered normal for the environment.

Vaxcel reserves the right to repair, replace or issue a credit for any properly installed product, provided it is returned per RMA instruction. This warranty is limited to the cost of the product only and does not extend to transportation, installation or replacement costs.

How can warranty service be obtained?

info@vaxcel.com
1-800-482-9235

